

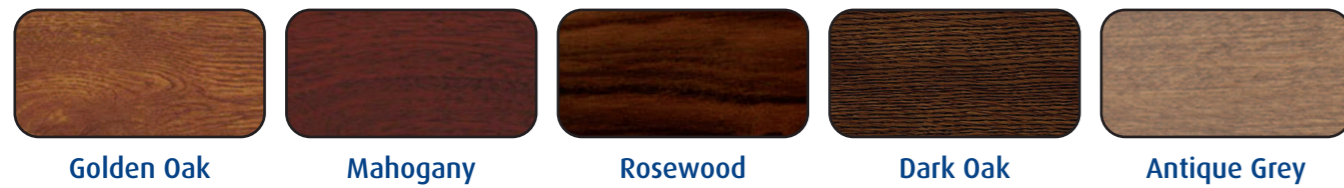
## Finishes Available

### Standard Colour Range

\*Guide section, endplates & canopy supplied colour co-ordinated at no extra cost



### Wood Effect Range



The printing process does not allow exact reproduction of the paint colours. If you are unsure of your colour choice please ask your approved installer for a sample.



## Remote Control

Controlled by a fully CE compliant, intelligent rolling code radio remote control system with courtesy light, push button and two hand held transmitters.

Rolling code technology generates a unique code every operation eliminating the possibility of code copying.



Approved Installer

**Warranty:** QualSecure Premier Garage Doors come complete with a 2 year guarantee on all manufactured parts. The tubular motor carries a 5 year manufacturer's warranty and the door colour finish has a limited 10 year guarantee.

Please note some marking may occur at the top of the concave side of the door over time. This is unavoidable and due to the rolling nature of the product and locking mechanism.

QualSecure is a brand name of Domestic Roller Shutters Ltd. Domestic Roller Shutters Ltd reserve the right to alter specifications to design and manufacture without notification. All specifications are correct at time of publication, errors and omissions excepted.





## Premier Garage Doors

Blending the convenience of power operation with smooth, vertical opening and the benefits of insulation, the QualSecure Premier Garage Door provides the perfect solution for any garage.

Manufactured from foam filled aluminium lath, available in twelve standard colours and five wood effect finishes, you can be confident that there is a QualSecure Premier Garage Door to suit your requirements and enhance your property.

Controlled by a unique intelligent remote control system, operation is simply effortless.

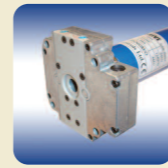
Additional benefits include security, reduction in heat loss and exterior noise whilst freeing up valuable garage and driveway space. A vehicle can be parked within 50mm of the door without disrupting operation.

Committed to offering the perfect garage door, all QualSecure doors are manufactured using the highest quality components and safety is never compromised.

## Standard Specification

### Electrically Operated:

Powered by a fully CE compliant, single phase 240 volt tubular motor with a built-in manual override facility allowing the door to be operated manually in the event of mains failure.



### Canopy:

QualSecure is the only UK manufactured garage door supplied with a full canopy as standard, giving additional strength to the construction of the door whilst shielding moving parts. The use of a canopy is undoubtedly more aesthetically pleasing. (Dimensions: 300mm x 300mm)



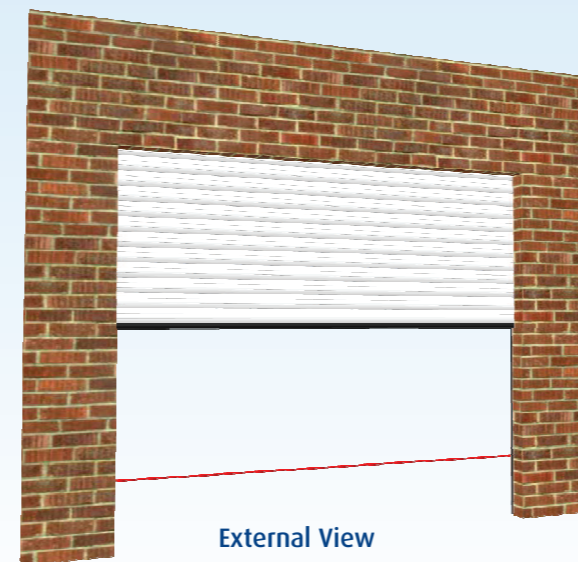
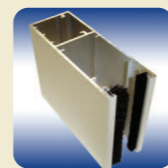
### Profile:

Premier Garage Doors are manufactured from a heavy duty, twin wall, CFC free foam filled aluminium profile. The use of foam provides strength and proven insulation values, reducing heat loss and exterior noise. Certified U Value of 4.73W/m<sup>2</sup> K. (Dimensions: 77mm x 20mm)

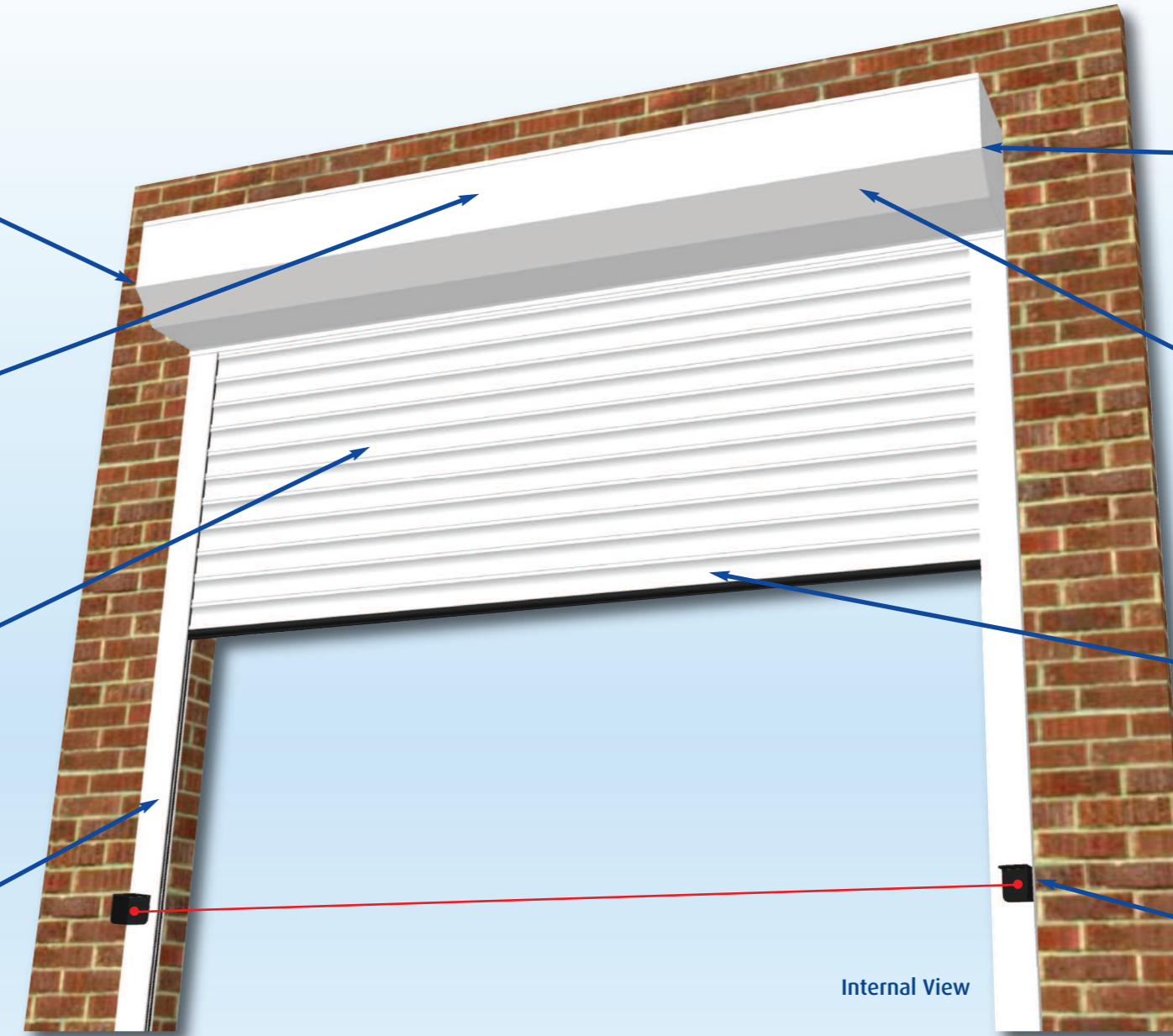


### Guide Section c/w Brush Strips:

Our deep, heavy duty guide section provides safety and security against high winds and would-be intruders. The two brush strips protect the curtain from unnecessary wear and ensure smooth operation whilst also reducing heat loss and exterior noise. (Dimensions: 95mm x 34mm)



External View



Internal View

### Safety Brake:

The fully CE compliant anti-fallback device prevents the door from freefalling when in the open position in the unlikely event of a motor failure.



### Auto-locks:

These heavy duty, anti-lift devices offer security against would-be intruders by preventing the door from being opened when in the fully closed position.



### Bottom Profile:

A heavy duty extruded aluminium bottom profile complete with a deep rubber seal provides additional strength and protection against adverse weather conditions.

(Dimensions: 78mm x 19mm)



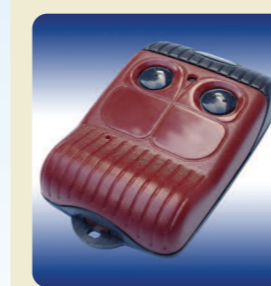
### Photocell:

The photocell detects physical obstructions by projecting an infra-red beam across the door opening. If the beam is interrupted whilst the door is in motion, the photocell will stop and reverse the door automatically.



## Transmitters Available

### Single Channel:



Two button, single channel transmitter. Allows remote operation of one garage door.



### Dual Channel:

Four button, dual channel transmitter. Allows individual, remote operation of two garage doors.



### Multi Channel:

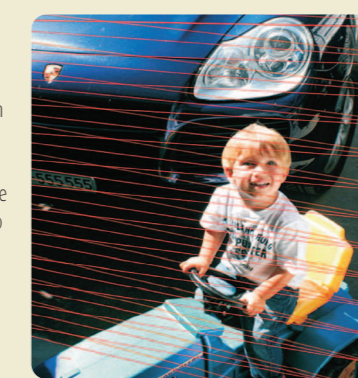
Three button, multi channel transmitter with LED display. Allows individual and/or group, remote operation of up to twelve garage doors.

## Optional Accessories

### Light Grid System:

Utilising the same technology as the photocell, the light grid, made up of 34 infra-red beams projected across the door opening, offers increased detection of physical obstructions.

If any one beam is interrupted whilst the door is in motion, the light grid will stop and reverse the door automatically.



### Low Level Override:

The secure, external, low-level override system allows you to manually operate the door in the event of mains failure, should there be no other means of access to your garage.



### Battery Back Up:

The battery back-up system is an uninterrupted power supply that allows you to electrically operate the door in the event of mains failure, should there be no other means of access to your garage.

