



# Premier Garage Doors

2016

Qualsecure  
safety and quality never compromised



# Premier Garage Doors



Blending the convenience of power operation with smooth, vertical opening and the benefits of insulation, the QualSecure Premier Garage Door provides the perfect solution for any garage.

Manufactured from foam filled aluminium lath, available in sixteen standard colours and four wood effect foil finishes, you can be confident that there is a QualSecure Premier Garage Door to suit your requirements and enhance your property.

Controlled by a unique intelligent remote control system, operation is simply effortless.

Additional benefits include security, reduction in heat loss and exterior noise whilst freeing up valuable garage and driveway space. A vehicle can be parked within 50mm of the door without disrupting operation.

Committed to offering the perfect garage door, all QualSecure doors are manufactured using the highest quality components and safety is never compromised.

**Qualsecure**  
safety and quality never compromised

# Finishes Available

## Standard Colour Range

\*Guide section, endplates & canopy supplied colour co-ordinated at no extra cost



## Wood Effect Range



The printing process does not allow exact reproduction of the paint colours. If you are unsure of your colour choice please ask your approved installer for a sample.

# Standard Specifications



## Optical Safety Edge: Supplied as standard

The constantly monitored wireless optical safety edge system provides optimum safety throughout the entire opening of the door.

Incorporated within the existing remote control system via a discreet plug-in card.

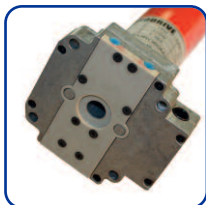
Activation by physical obstruction immediately stops and returns the door to the fully open position.

As the system is constantly monitored, the general life expectancy of the transmitter batteries is two years.

Category 3 CE Compliant **CE**

01

Electrically Operated:



### Electrically Operated:

Powered by a fully CE compliant, single phase 240 volt tubular motor with a built-in manual override facility allowing the door to be operated manually in the event of mains failure.

02

Canopy:



### Canopy:

QualSecure is the only UK manufactured garage door supplied with a full canopy as standard, giving additional strength to the construction of the door whilst shielding moving parts. The use of a canopy is undoubtedly more aesthetically pleasing. (Dimensions: 300mm x 300mm)

05

Safety Brake:



### Safety Brake:

The fully CE compliant anti-fallback device prevents the door from freefalling when in the open position in the unlikely event of a motor failure.

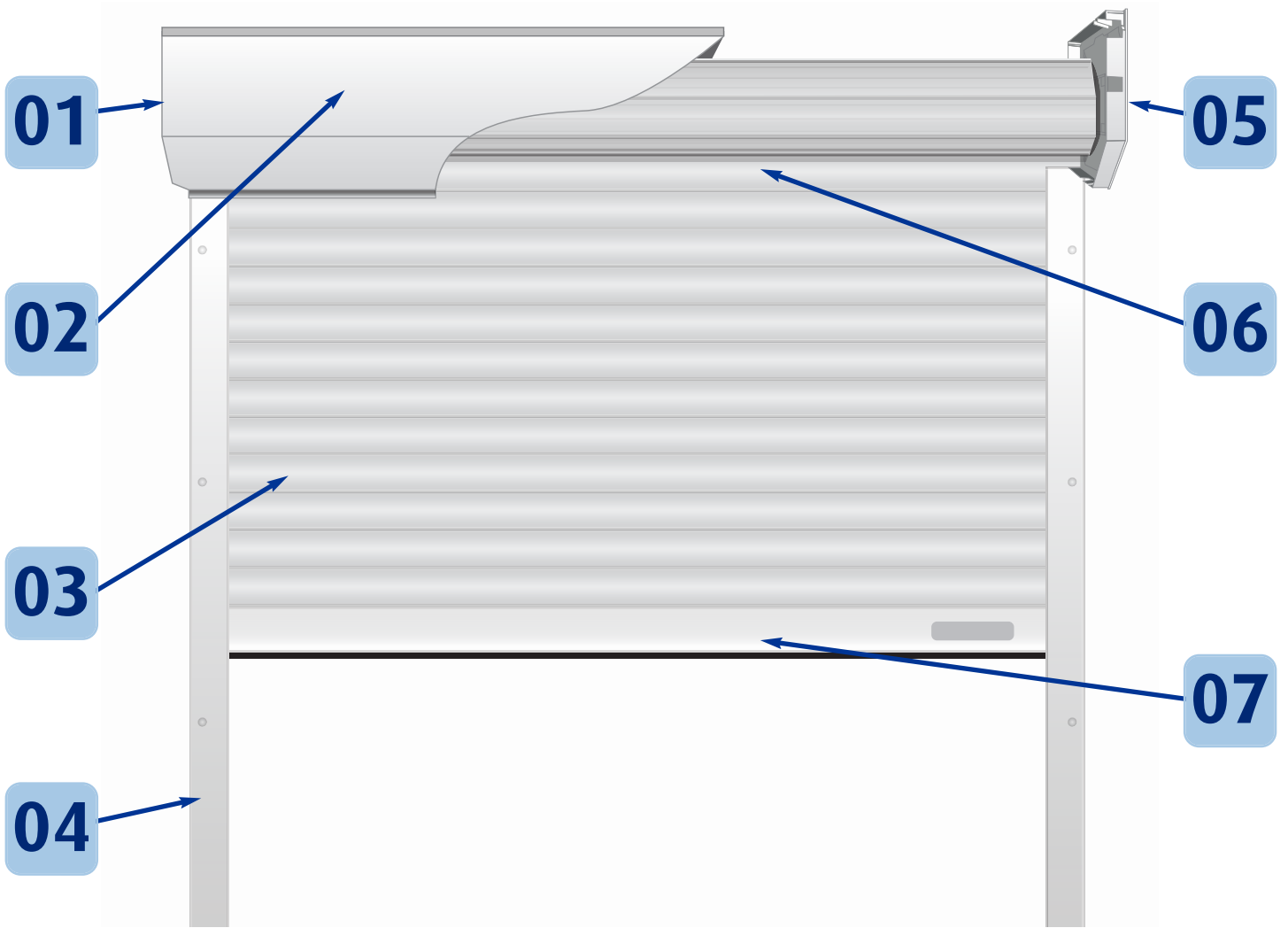
06

Auto-locks:

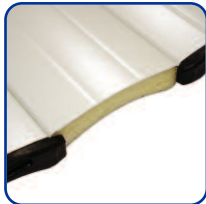


### Auto-locks:

These heavy duty, anti-lift devices offer security against would-be intruders by preventing the door from being opened when in the fully closed position.



03

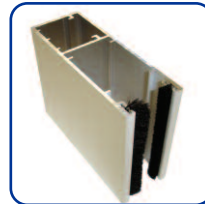


**Profile:**

Premier Garage Doors are manufactured from a heavy duty, twin wall, CFC free foam filled aluminium profile. The use of foam provides strength and proven insulation values, reducing heat loss and exterior noise. Certified U Value of 4.73W/m<sup>2</sup> K. (Dimensions: 77mm x 20mm)

Profile:

04

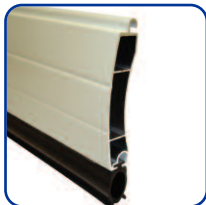


**Guide Section  
c/w Brush Strips:**

Our deep, heavy duty guide section provides safety and security against high winds and would-be intruders. The two brush strips protect the curtain from unnecessary wear and ensure smooth operation whilst also reducing heat loss and exterior noise. (Dimensions: 95mm x 34mm)  
**Reduced guide section available dimensions: 78mm x 34mm**

Guide Section  
c/w Brush Strips:

07



**Bottom  
Profile:**

A heavy duty extruded aluminium bottom profile complete with a deep rubber seal provides additional strength and protection against adverse weather conditions.

(Dimensions: 78mm x 19mm)

Bottom Profile:

# Standard Specifications

## Premier Remote Control



Remote control kit c/w 2 transmitters, courtesy light, push button and wireless optical safety edge system.

Controlled by a fully CE compliant, intelligent rolling code radio remote control system with courtesy light, push button and two hand held transmitters.

Rolling code technology generates a unique code every operation eliminating the possibility of code copying.

## Transmitters Available

### Dual Channel



### Multi Channel



#### Dual Channel:

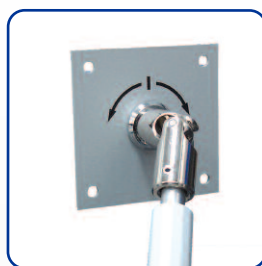
Two button, dual channel transmitter. Allows dedicated open/close operation of one garage door or sequential open/stop/close operation of up to 2 doors. QUALFOB2 supplied as standard with an option to upgrade to our Premium QUALPREM2 handset.

#### Four Channel:

Four button, four channel transmitter. Allows dedicated open/close operation of two garage doors or sequential open/stop/close operation of up to 4 doors. QUALFOB4 or QUALPREM4 handsets available.

## Optional Accessories

### Low Level Override:



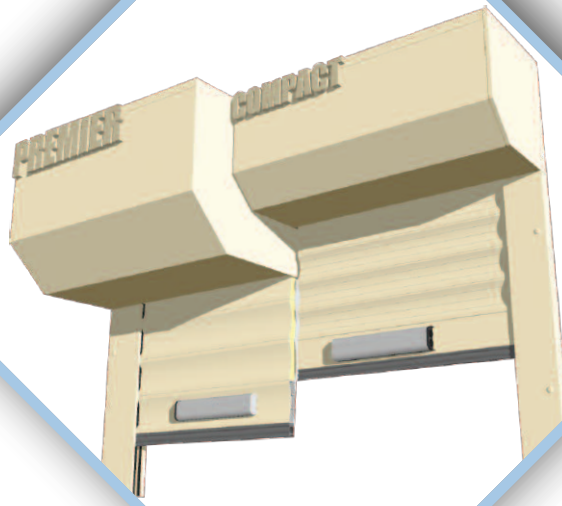
The secure, external, low-level override system allows you to manually operate the door in the event of mains failure, should there be no other means of access to your garage.

## Optional Accessories

### Battery Back Up:



The battery back-up system is an uninterrupted power supply that allows you to electrically operate the door in the event of mains failure, should there be no other means of access to your garage.

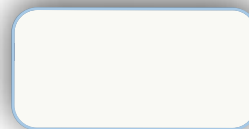


# Compact Garage Doors

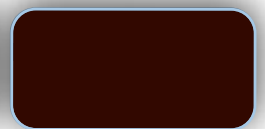
For garages with limited headroom, the QualSecure Compact Garage Door is a tailor made solution.

Incorporating all of the features of our Premier Door, the compact canopy, smaller profile and narrower guide section help to achieve the maximum possible drive-through opening.

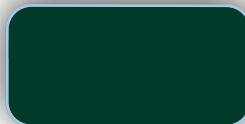
## Finishes Available Standard Colour Range



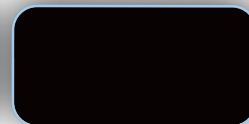
White RAL9010\*



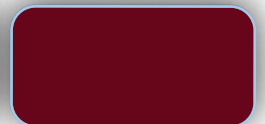
Brown RAL8019\*



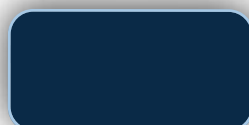
Fir Green RAL6009\*



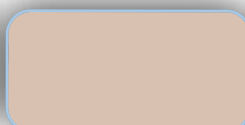
Black RAL9005\*



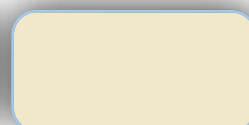
Red RAL3004\*



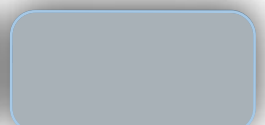
Blue RAL5011\*



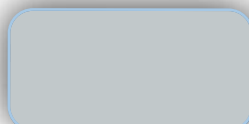
Beige RAL N/A\*



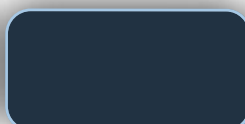
Ivory RAL1015\*



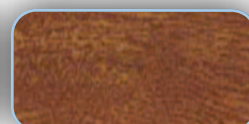
Alu. Metallic RAL9006\*



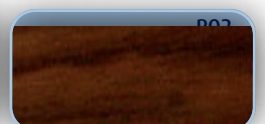
Grey RAL7038\*



Anthracite RAL7016\*



Golden Oak



Rosewood

\*Guide section, endplates & canopy supplied colour co-ordinated at no extra cost



**Qualsecure**  
safety and quality never compromised



Approved Installer

**Warranty:** QualSecure Premier Garage Doors come complete with a 2 year guarantee on all manufactured parts. The tubular motor carries a 5 year manufacturer's warranty and the door colour finish has a limited 10 year guarantee.

Please note some marking may occur at the top of the concave side of the door over time. This is unavoidable and due to the rolling nature of the product and locking mechanism.

QualSecure is a brand name of Domestic Roller Shutters Ltd. Domestic Roller Shutters Ltd reserve the right to alter specifications to design and manufacture without notification. All specifications are correct at time of publication, errors and omissions excepted.

UK Manufactured

